



## System Firmware Update Instructions for Pioneer In-Dash AV Receivers (AVH-X8650BT)

This firmware update (version **1.20** for AVH) applies only to the following models of Pioneer products sold in Australia & New Zealand.

AVH-X8650BT
-------------

### **IMPORTANT**

Please download and print these firmware update instructions before downloading and installing the firmware update. It is important that you complete all steps correctly and in the order described below. Be aware that this update requires a **two part update**.

Note: If you have any questions, please contact Pioneer Technical support at 1800 988 268, Monday through Friday, 9:00 AM - 5:00 PM excluding holidays.

In order to perform this update, the following items are needed:

- Pioneer In-Dash Navigation AV receiver listed above.
- A SD memory card or USB storage device with the following requirements.
  - 2 GB or larger in capacity, formatted to FAT32
  - Should be blank (should not contain any files)

### **CAUTION**

- **DO NOT** turn your unit off, eject the SD memory card or disconnect the USB storage device while the firmware is being updated.
- You can only update the firmware when the vehicle is stopped and the parking brake is engaged.

### **IMPORTANT (For navigation system users)**

- If you install this Firmware, all navigation function settings and save data will be formatted. Once the update has finished, you will need to reconfigure the settings.
- Any content purchased and added through Naviextras will also need to be re-installed. Note that no charges will be incurred to download previously purchased content.

## Checking the firmware version on your unit

Check whether the firmware of your unit needs to be updated by checking the version number of the firmware.

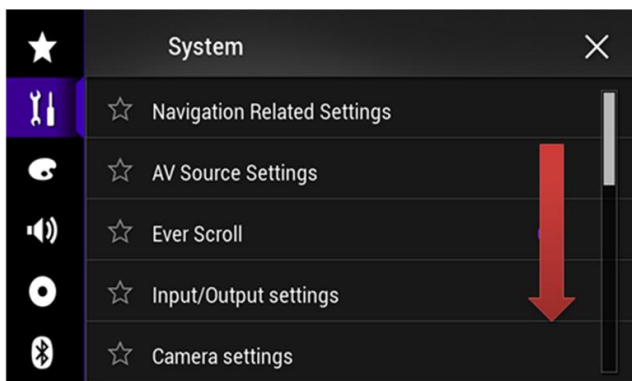
### Procedure:

1. Press the HOME button to display the Top menu screen.
2. Touch the following keys in the following order.

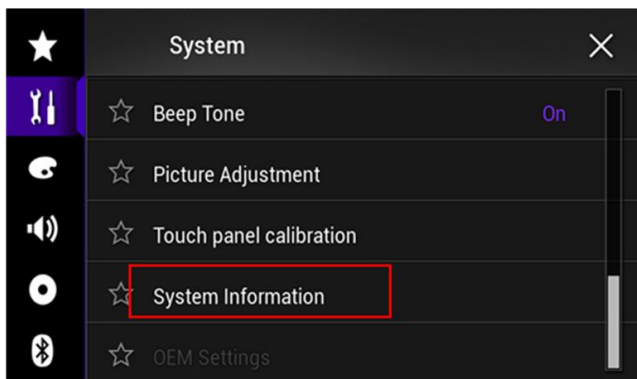


The “System” screen appears

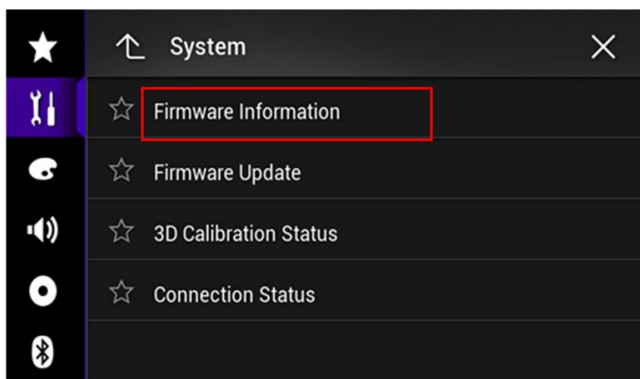
3. Scroll down the list.



4. Touch [System Information].



5. Touch [Firmware Information].



6. After the “Firmware Information” screen appears, check the firmware version number.
7. Verify that the firmware on your unit is not already **1.20** for AVH.

## Checking the Bluetooth software version

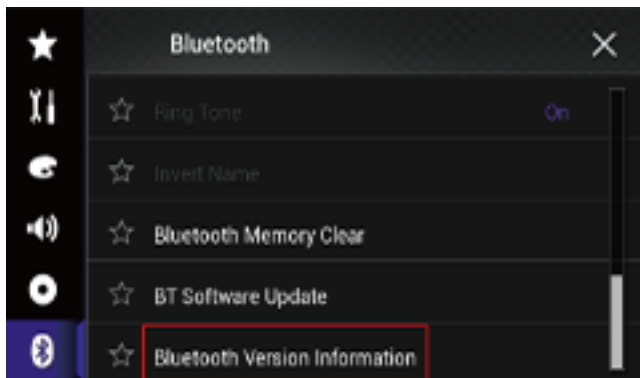
### Procedure:

1. Press the HOME button to display the Top menu screen.
2. Touch the following keys in the following order.



The "Bluetooth" screen appears.

3. Touch [Bluetooth Version Information]



4. The version of this product's Bluetooth device appears.  
Verify that the version of Bluetooth device is not already **03.41.xx**.





## Downloading the firmware update files from Pioneer's website

1. Download the firmware update files by clicking on the following link and finding your product:

<https://www.pioneer.com.au/firmwaresoftware/>

2. Extract the download file

The Downloaded zip file will produce the following file when decompressed: (See the table below)

<b>AVH-X8650BT</b>	<b>AVIC5000NEX</b>

## Updating the firmware on your Unit

### IMPORTANT

**AVH-X8650BT**

- DO NOT perform this firmware update if the model number of your Pioneer product is anything other than one of the above models.
- Ensure that the update file is located within the root (top) folder of your SD memory card or USB storage device. There should be no other files within the SD memory card or USB storage device.
- While your unit is being updated, DO NOT turn off the system's power and DO NOT touch the unit's touchscreen as this may result in severe damage to your unit.
- DO NOT remove the SD memory card or USB storage device during the firmware update process.
- Performing the firmware update will restore all settings to their default values.
- Disconnect any external mobile devices that are currently connected to your unit.

## Part 1: Updating the firmware on your Unit

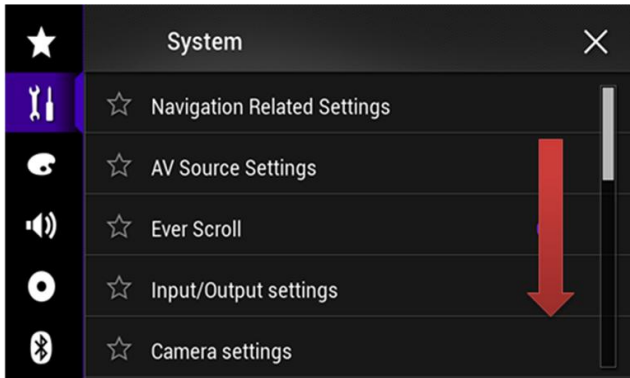
### Procedure:

1. Connect a blank (formatted) SD memory card or USB storage device to your computer, and then locate the correct update file and copy it onto the SD memory card or USB storage device.
2. Insert an SD memory card into the SD card slot or connect the USB storage device to the USB port.
3. Turn the source off on your unit.
4. Press the HOME button to display the Top menu screen.
5. Touch the following keys in the following order.

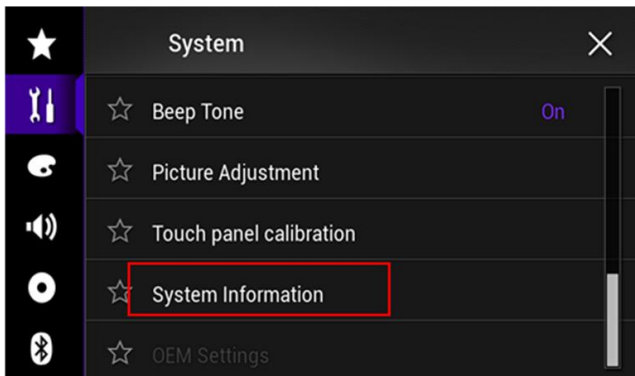


The “System” screen appears.

6. Scroll down the list.



7. Touch [System Information].

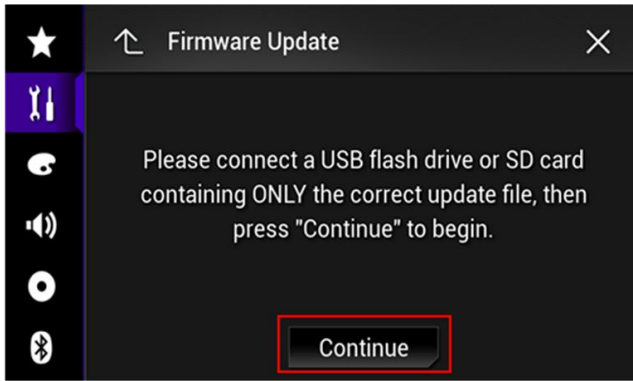


8. Touch [Firmware Update].

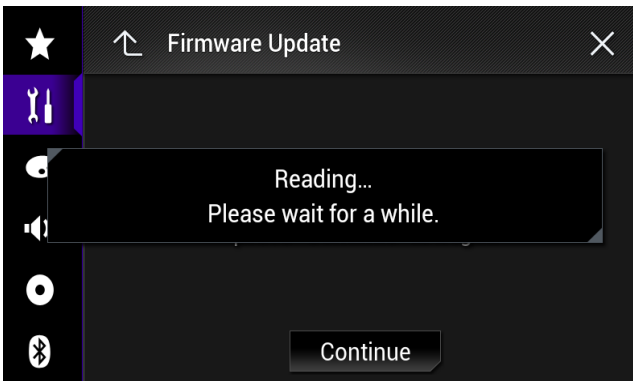


The “Firmware Update” screen appears.

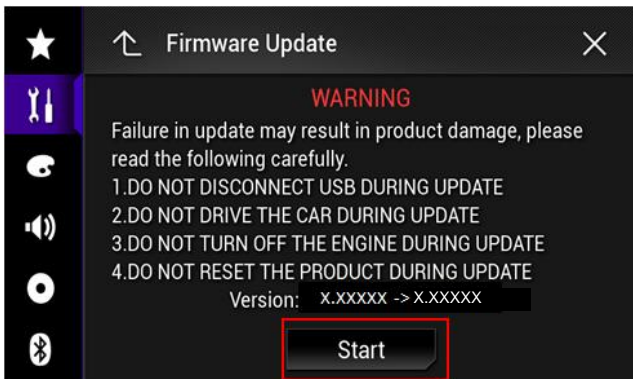
9. Touch [Continue] to display the data transfer mode.



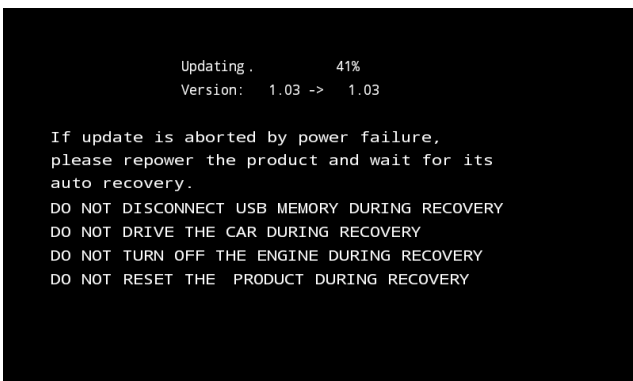
Wait for completion of processing of file check.



10. Touch [Start].



Progress status is shown.



11. Wait until the update process is complete.

Once the firmware update process is complete, the unit will display the "Update Complete" screen.



12. Press the HOME button.

13. Remove the SD memory card or USB storage device.

14. The firmware update is complete.

## Part 2: Updating Bluetooth software

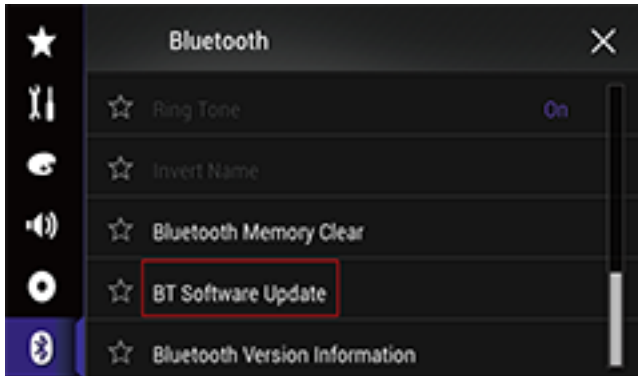
### Procedure:

Use the same update file with firmware update on unit.

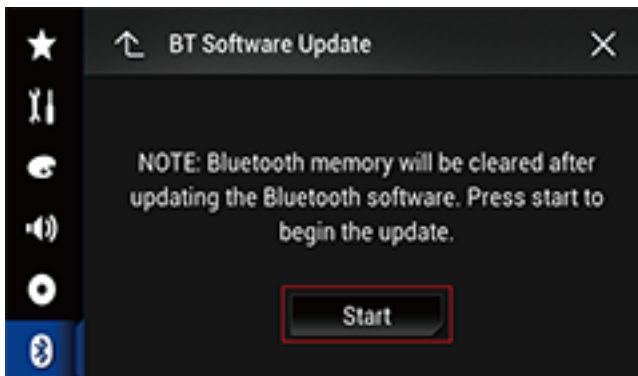
1. Press the HOME button to display the Top menu screen.
2. Touch the following keys in the following order.



3. Touch [BT software Update]



4. Touch [Start]



The data transfer screen is displayed.

- Follow the on-screen instructions to finish updating the Bluetooth software.

### **Check if the firmware and Bluetooth software has been updated**

Please refer “Checking the firmware version” and “Checking the Bluetooth software version” to check if the firmware has been updated.