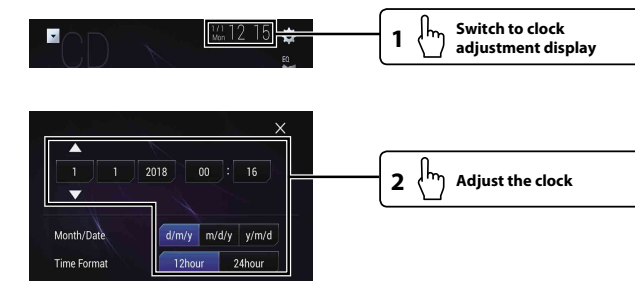




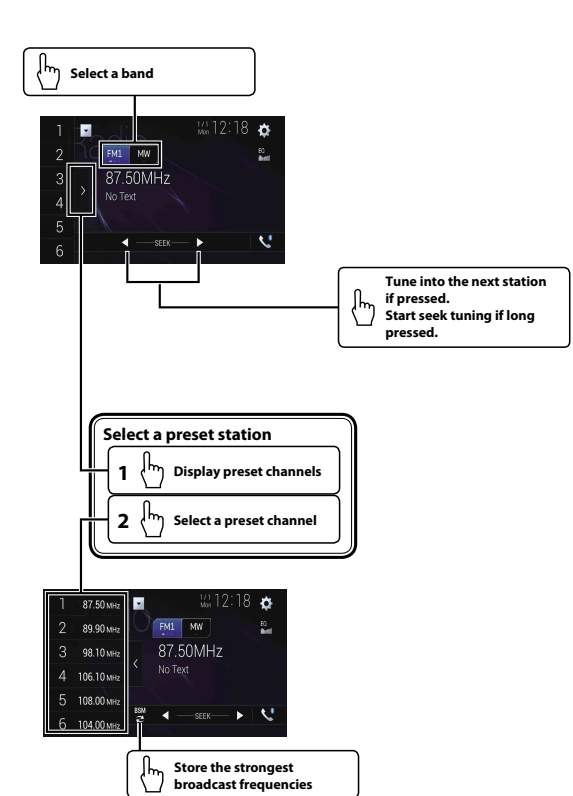
Selecting the source



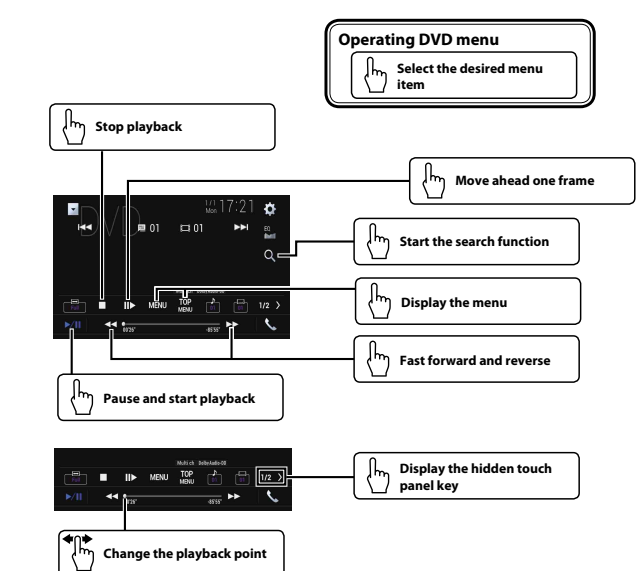
Setting the clock



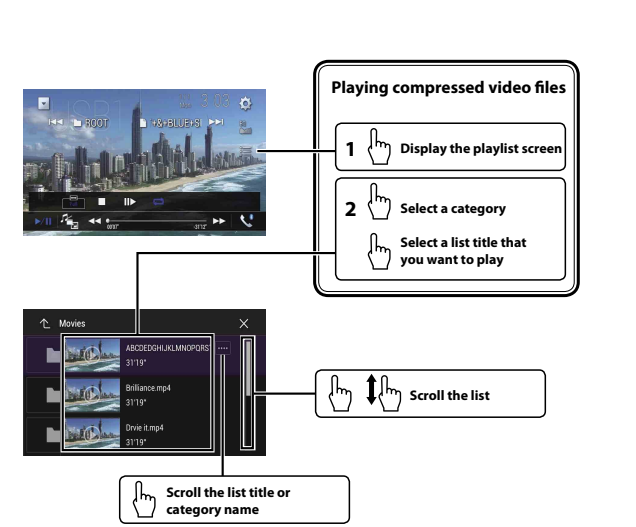
Tuner operation



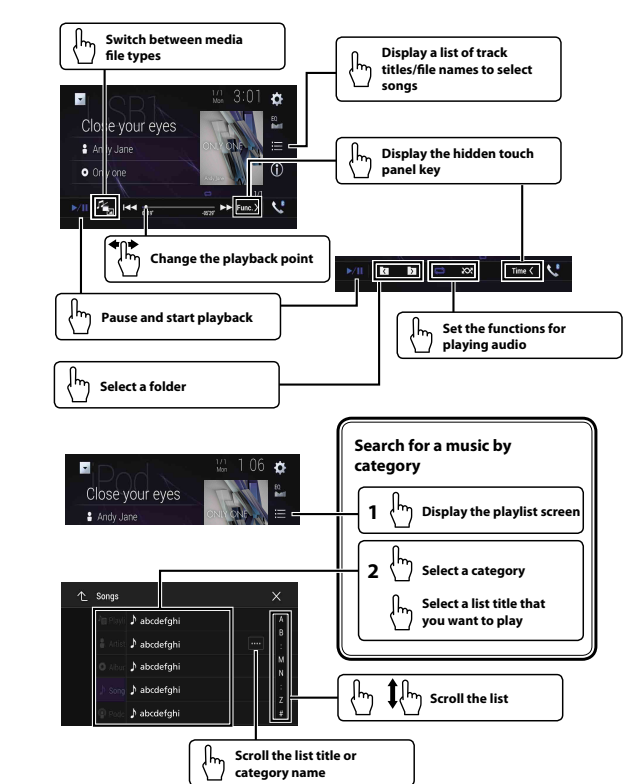
Moving images operation



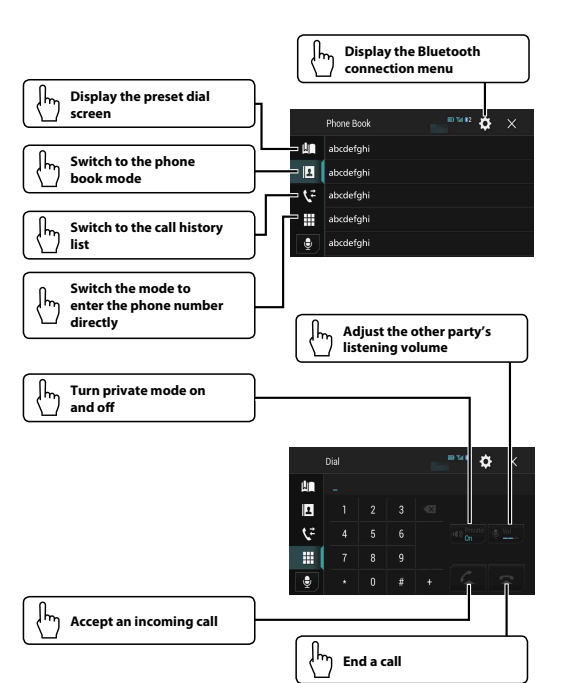
Moving images operation



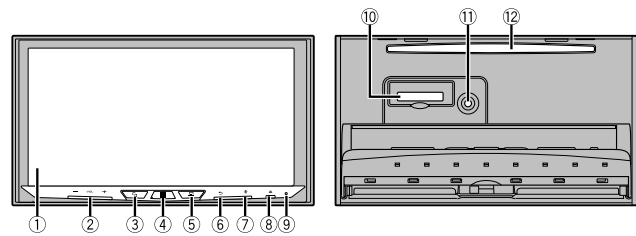
Audio operation



Bluetooth telephone operation



What's What



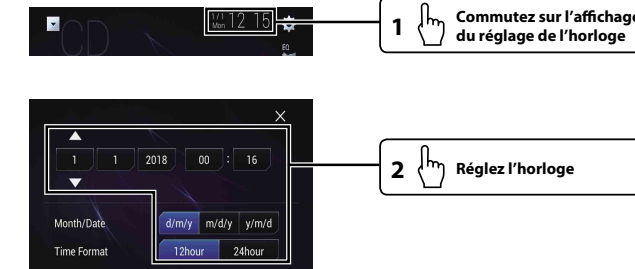
- 1 LCD screen
 - 2 VOL (+/-) button
 - 3 button
 - 4 button
 - 5 button
 - 6 button
 - 7 button
 - 8 button
 - 9 RESET button
 - 10 SD card slot
 - 11 Auto EQ microphone input jack
 - 12 Disc-loading slot
- Press to switch between the Application screen and the AV operation screen.
Press and hold to switch to the camera view mode.
Press to display the top menu screen.
Press and hold to power off.
Press to display the menu bar.
Press and hold to mute or unmute.
Press to display the top menu screen or back to previous screen.
Press and hold to turn off the display.
When the display is turned off, touch the screen to revert to the original screen.
Press to activate the voice recognition mode with a connected iPhone or smartphone.



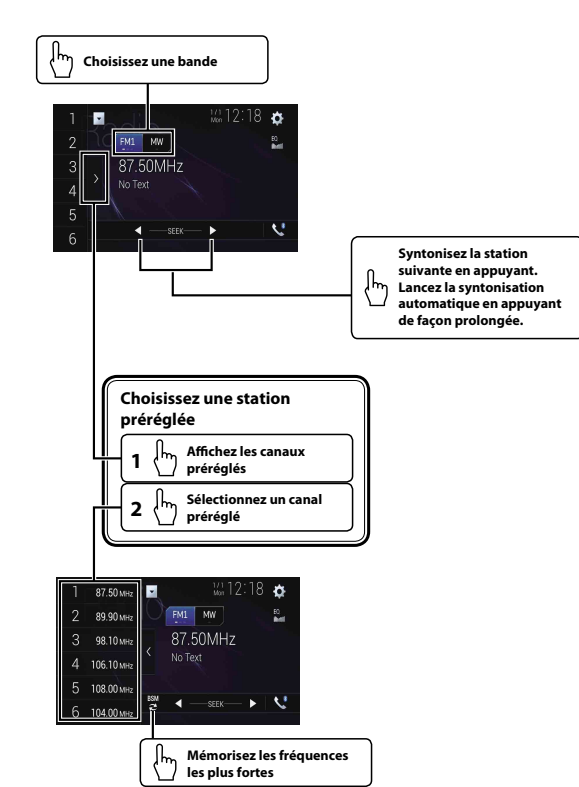
Sélection de la source



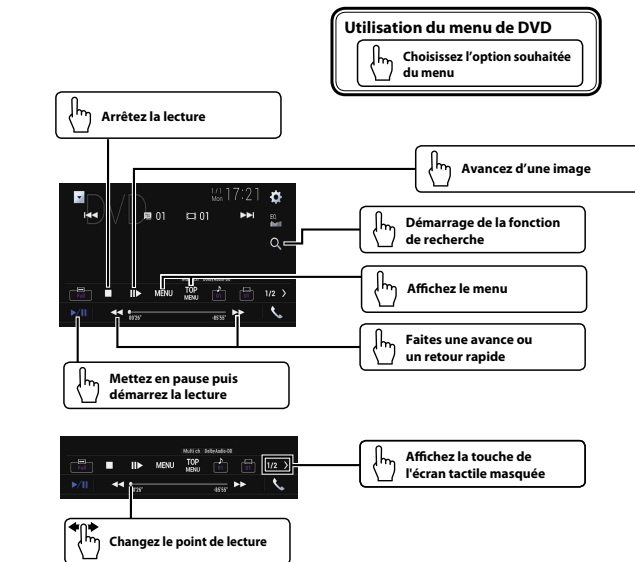
Réglage de l'horloge



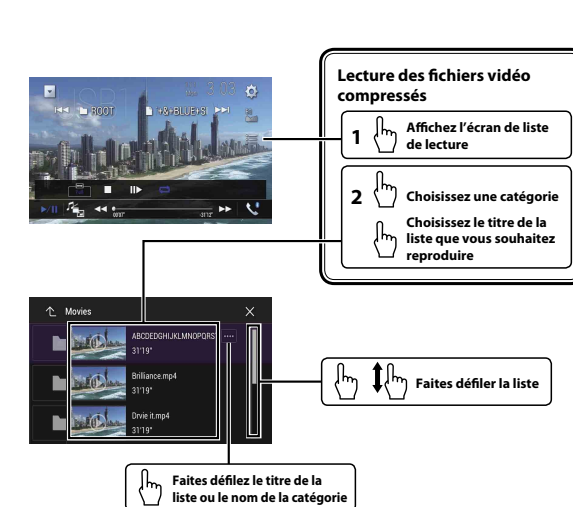
Utilisation du tuner



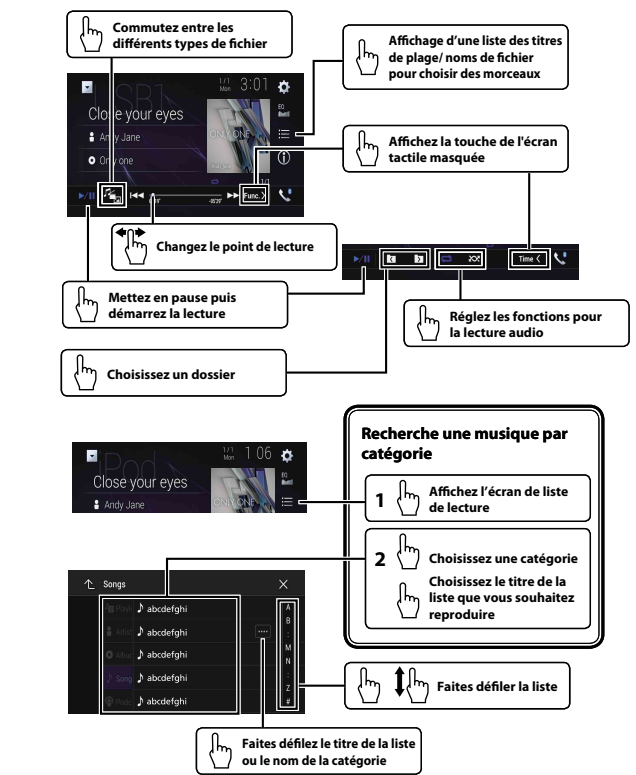
Exploitation des images animées



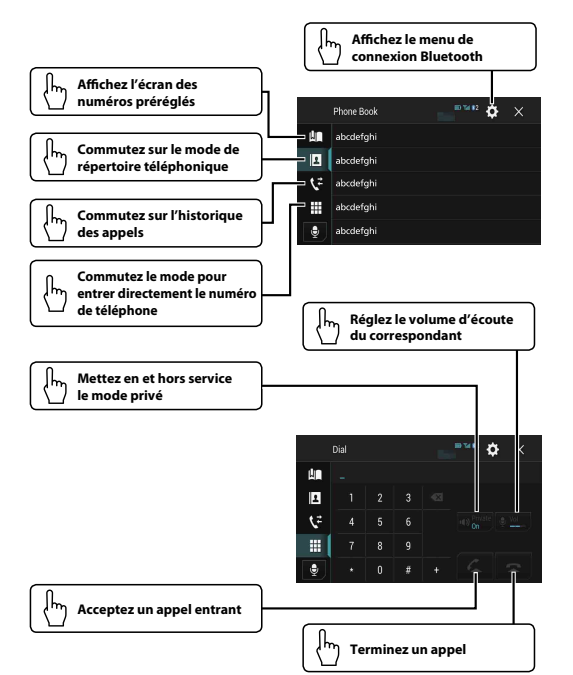
Exploitation des images animées



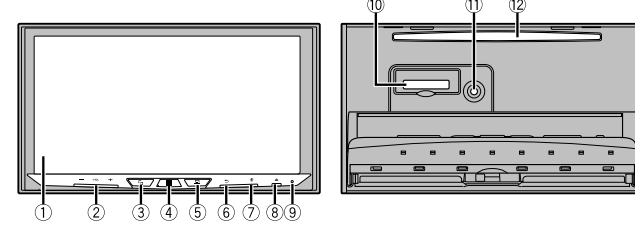
Opérations audio



Utilisation d'un téléphone Bluetooth



Description de l'appareil



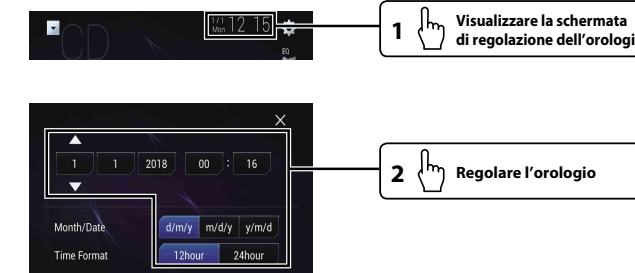
- 1 Écran LCD
 - 2 Bouton VOL (+/-)
 - 3 Bouton
 - 4 Bouton
 - 5 Bouton
 - 6 Bouton
 - 7 Bouton
 - 8 Bouton
 - 9 Bouton RESET
 - 10 Fente de carte SD
 - 11 Prise d'entrée de microphone Auto EQ
 - 12 Fente de chargement de disque
- Appuyez pour passer de l'écran Application à l'écran d'opération AV.
 Maintenez la touche enfoncée pour passer en mode Visualisation des caméras.
 Appuyez pour afficher le menu principal.
 Maintenez la touche enfoncée pour mettre l'appareil hors tension.
 Appuyez pour afficher la barre de menu.
 Maintenez la touche enfoncée pour activer ou désactiver.
 Appuyez pour afficher le menu principal ou revenir à l'écran précédent.
 Maintenez la touche enfoncée pour désactiver l'affichage.
 Lorsque l'affichage est désactivé, touchez l'écran pour revenir à l'écran initial.
 Appuyez pour activer le mode de reconnaissance vocale avec un iPhone ou un smartphone connecté.



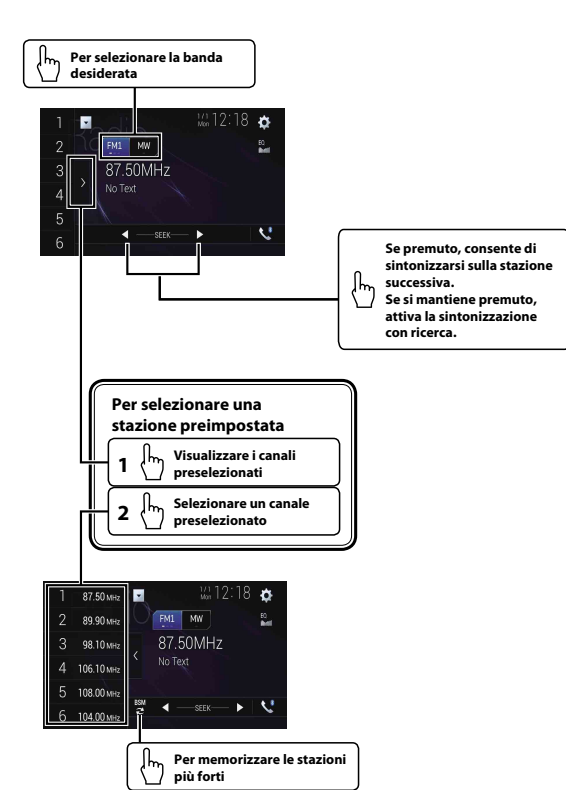
Selezione della sorgente



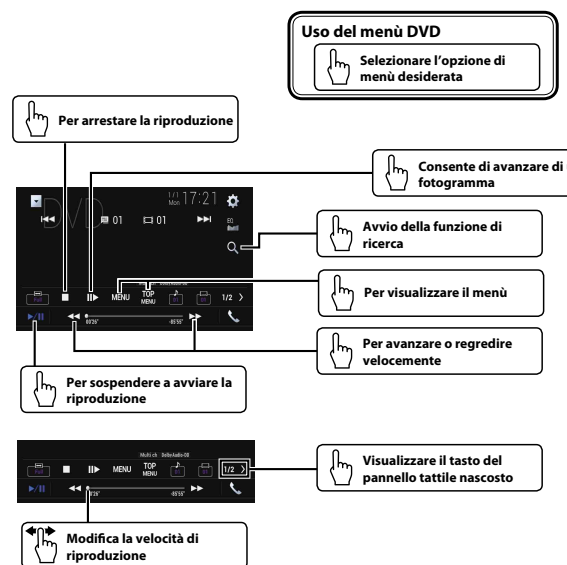
Impostazione dell'orologio



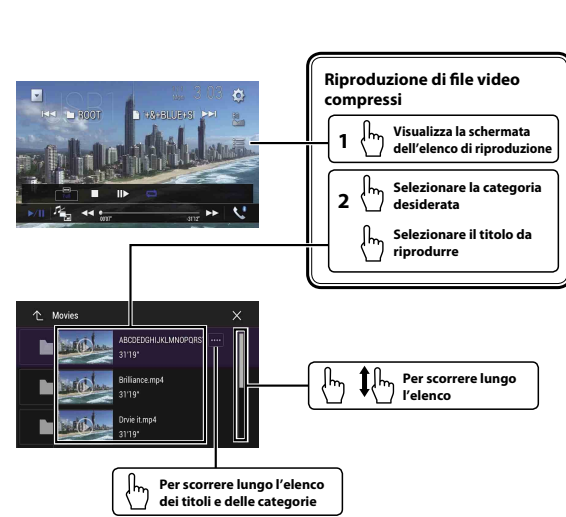
Uso del sintonizzatore



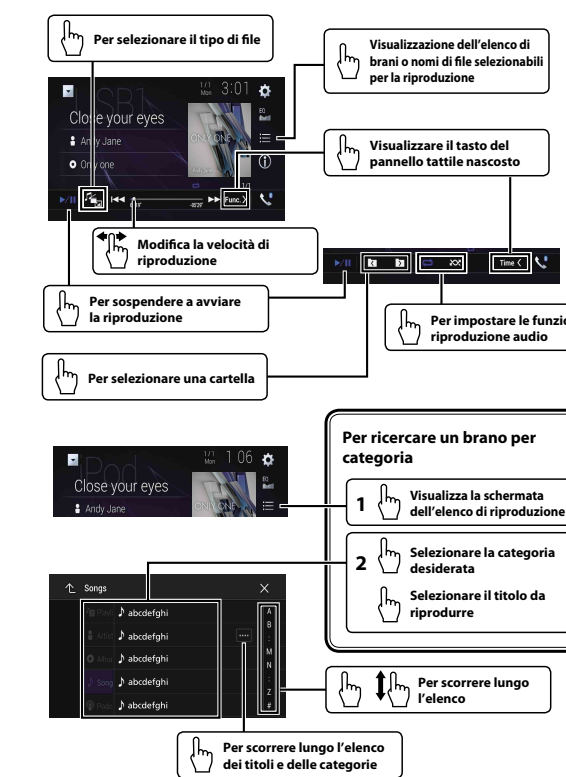
Uso delle immagini video



Uso delle immagini video



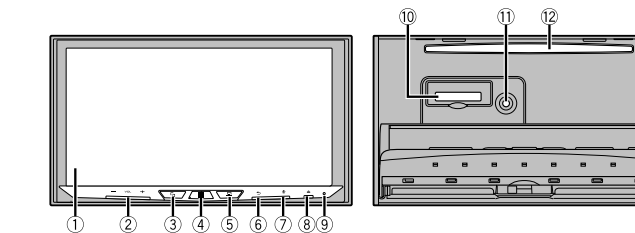
Uso delle funzioni audio



Uso del telefono Bluetooth



Nomenclatura



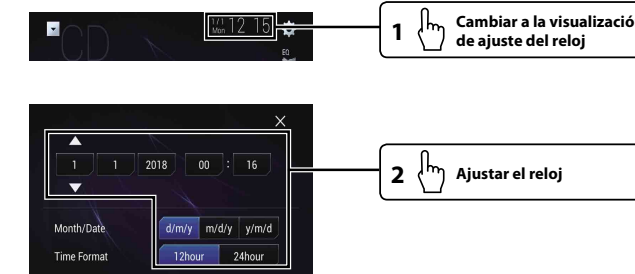
- 1 Schermo LCD
 - 2 Pulsante **VOL** (+/-)
 - 3 Pulsante
 - 4 Pulsante
 - 5 Pulsante
 - 6 Pulsante
 - 7 Pulsante
 - 8 Pulsante
 - 9 Pulsante **RESET**
 - 10 Slot per scheda SD
 - 11 Connettore di ingresso del microfono Auto EQ
 - 12 Slot di caricamento del disco
- 1 Premere per passare dalla schermata dell'applicazione alla schermata operativa AV. Tenere premuto per passare alla modalità di visualizzazione fotocamera.
- 2 Premere per visualizzare la schermata del menu principale. Tenere premuto per spegnere.
- 3 Premere per visualizzare la barra del menu. Tenere premuto per disattivare o attivare l'audio.
- 4 Premere per visualizzare la schermata del menu principale o tornare alla schermata precedente. Tenere premuto per spegnere il display.
- 5 Quando il display è spento, toccare lo schermo per tornare alla schermata originale.
- 6 Premere per attivare la modalità di riconoscimento vocale con un iPhone o smartphone connesso.



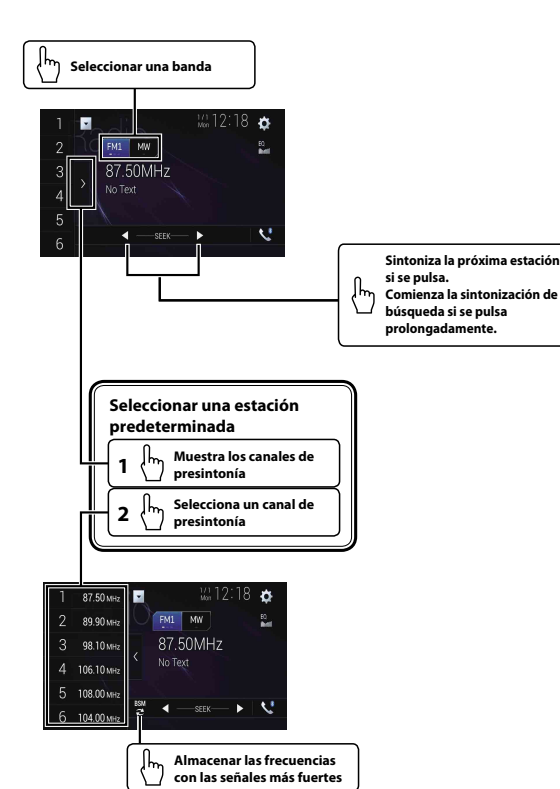
Seleccionar la fuente



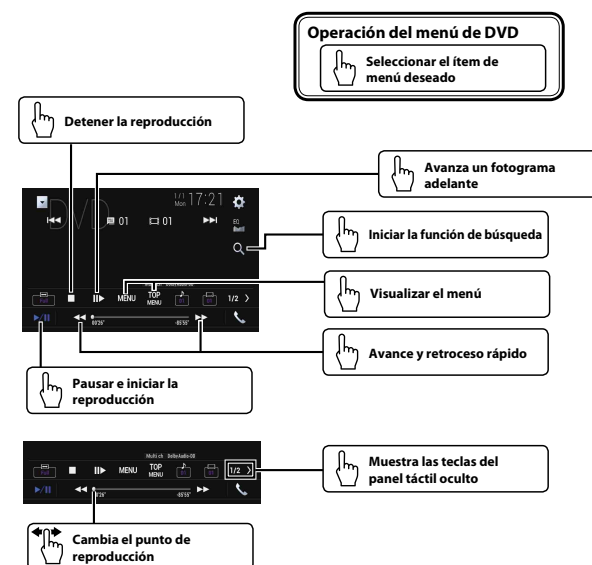
Ajuste del reloj



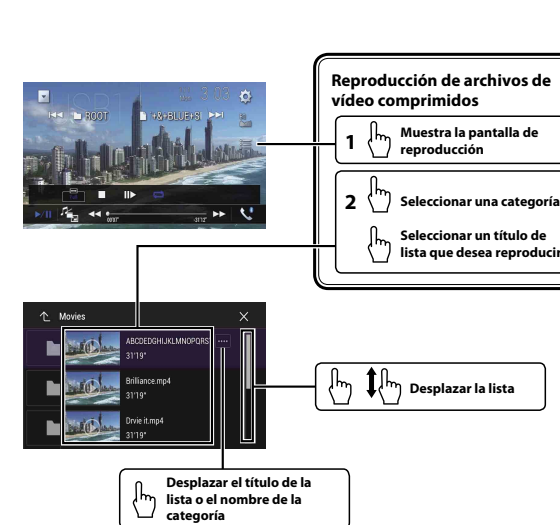
Operación del sintonizador



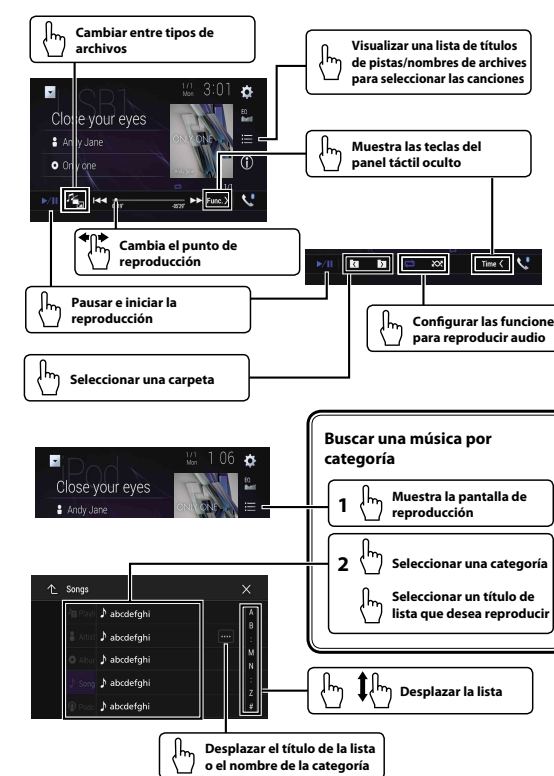
Operación de imágenes en movimiento



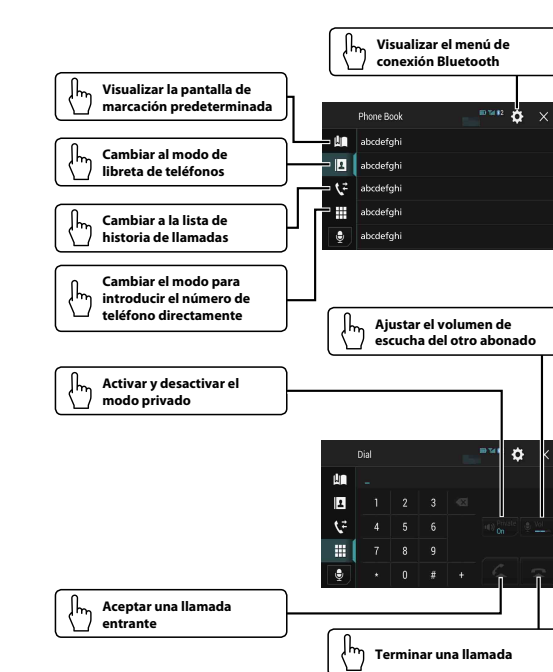
Operación de imágenes en movimiento



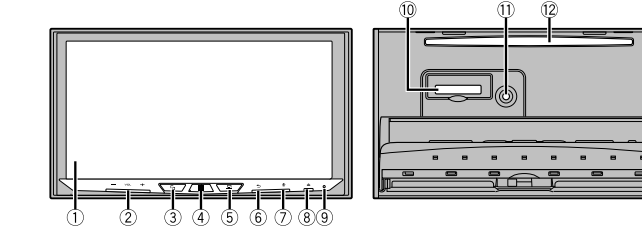
Operación de audio



Operación con teléfono Bluetooth



Qué es cada cosa



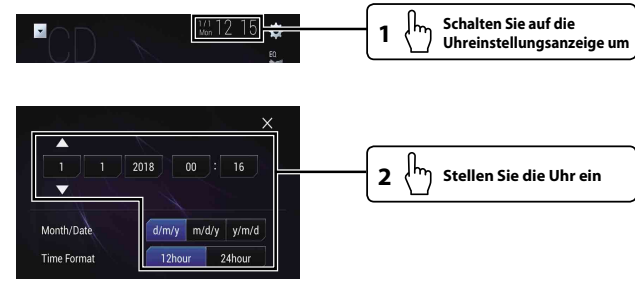
- Pantalla LCD
 - Botón **VOL** (+/-)
 - Botón
 - Botón
 - Botón
 - Botón
 - Botón
 - Botón
 - Botón
 - Ranura para tarjeta SD
 - Conector de entrada de micrófono Auto EQ
 - Ranura para la carga de discos
- Púselo para alternar entre la pantalla de aplicaciones y la pantalla de operaciones AV. Manténgalo pulsado para acceder al modo de visualización de la cámara.
- Manténgalo pulsado para mostrar la pantalla del menú inicial. Manténgalo pulsado para apagar.
- Púselo para mostrar la barra de menús. Manténgalo pulsado para silenciar o activar el sonido.
- Púselo para mostrar la pantalla del menú inicial o para volver a la pantalla anterior. Manténgalo pulsado para apagar la pantalla.
- Con la pantalla apagada, toque el panel para volver a la pantalla original.
- Pulse este botón para activar el modo de reconocimiento de voz con un iPhone o smartphone conectado.

: Antippen : Antippen und schieben

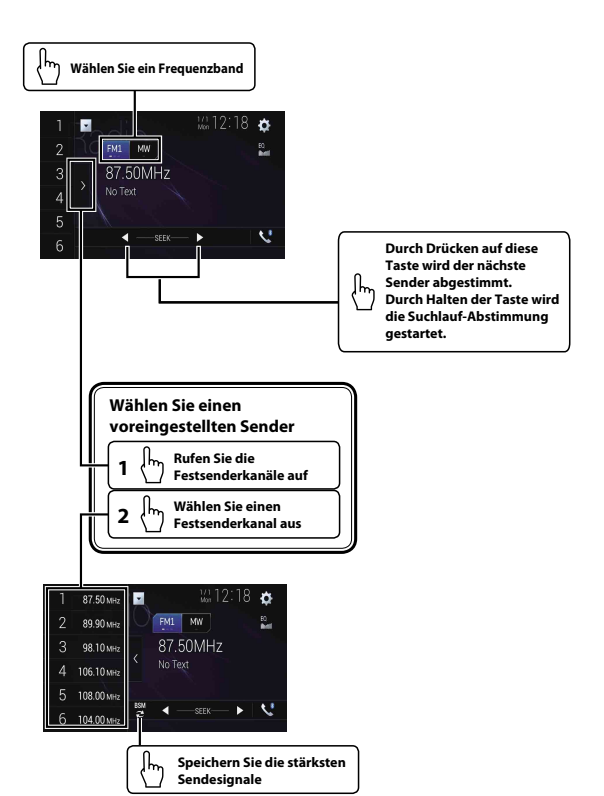
Wahl der Signalquelle



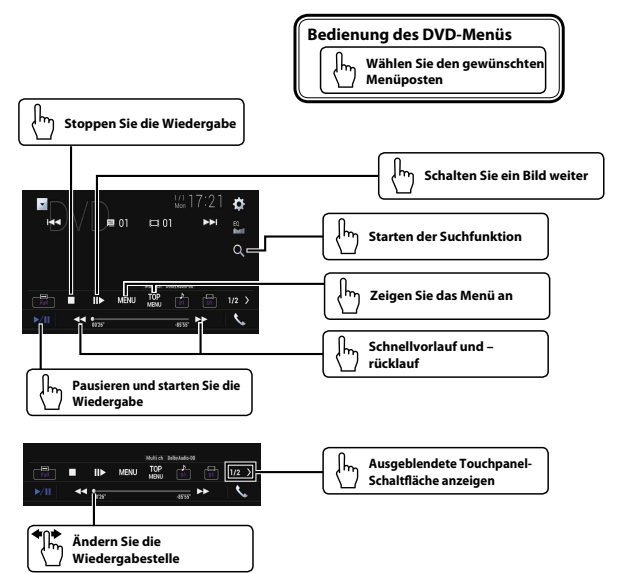
Einstellen der Uhrzeit



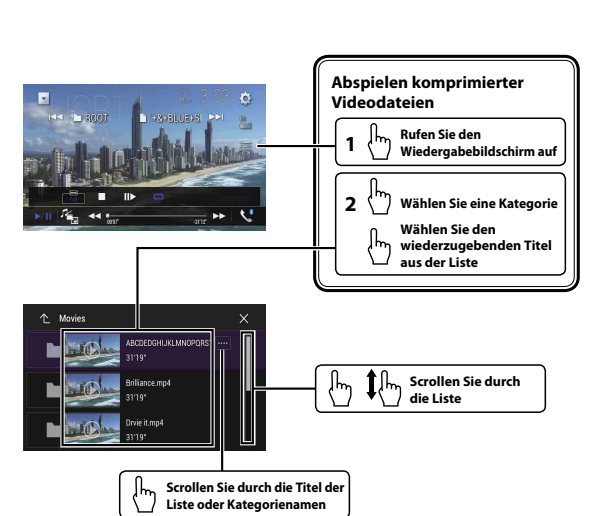
Tuner-Betrieb



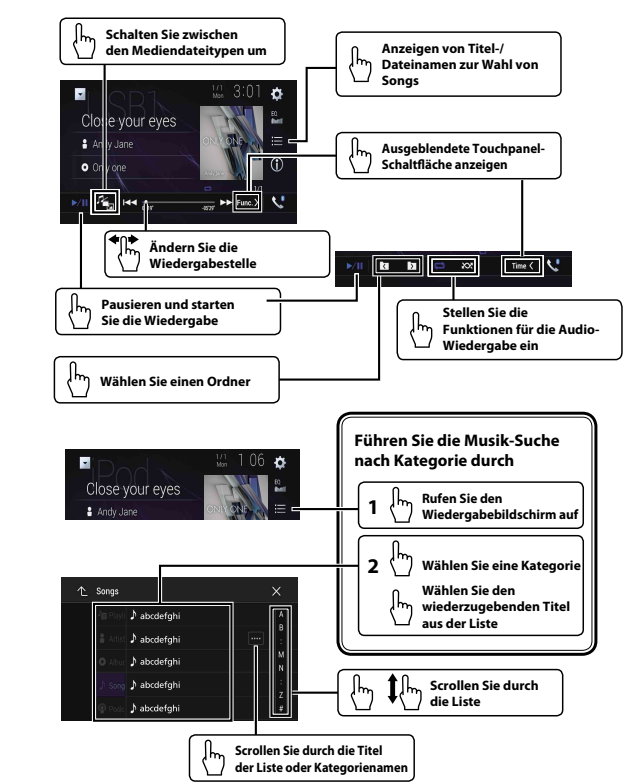
Bewegbild-Betrieb



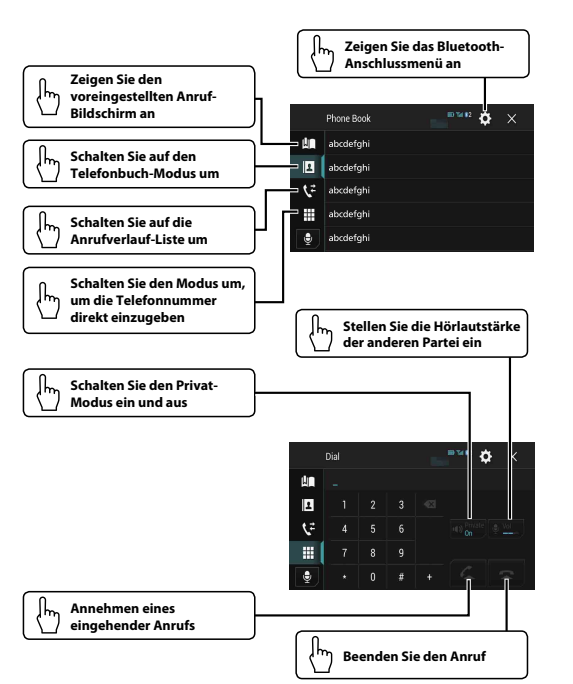
Bewegbild-Betrieb



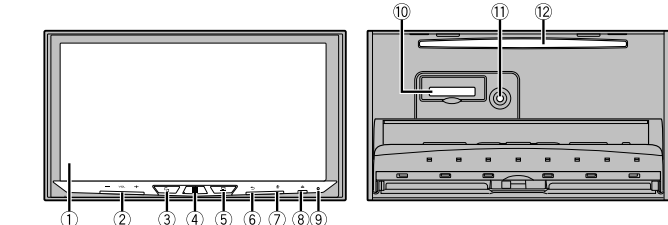
Audio-Betrieb



Bluetooth-Telefonbetrieb



Die einzelnen Teile



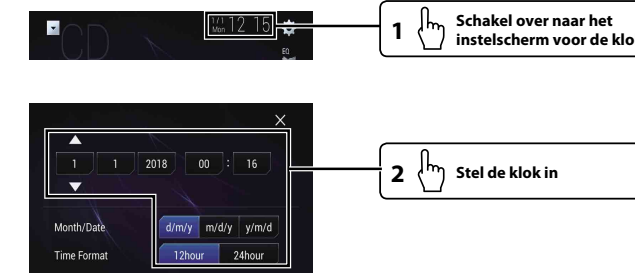
- 1 LCD-Bildschirm
- 2 VOL (+/-)-Taste
- 3 -Taste
Drücken Sie diese Taste, um zwischen dem Anwendungsbildschirm und dem AV-Funktionsbildschirm umzuschalten.
- 4 -Taste
Drücken Sie diese Taste, um den Hauptmenübildschirm anzuzeigen. Halten Sie die Taste gedrückt, um zum Kameraanzeigemodus umzuschalten.
- 5 -Taste
Drücken Sie diese Taste, um die Menüleiste anzuzeigen. Halten Sie die Taste gedrückt, um die Stummenschaltung zu aktivieren oder zu deaktivieren.
- 6 -Taste
Drücken Sie diese Taste, um den Hauptmenübildschirm anzuzeigen oder zum vorherigen Bildschirm zurückzukehren. Halten Sie die Taste zum Ausschalten des Displays gedrückt.
- Wenn das Display ausgeschaltet ist, berühren Sie den Bildschirm, um wieder den ursprünglichen Bildschirm anzuzeigen.
- 7 -Taste
Drücken, um den Spracherkennungsmodus für ein verbundenes iPhone oder Smartphone zu aktivieren.
- 8 -Taste
- 9 RESET-Taste
- 10 SD-Karteneinschub
- 11 Auto EQ-Mikrofoneingangsbuchse
- 12 Disc-Einschub

Selecteren van de signaalbron

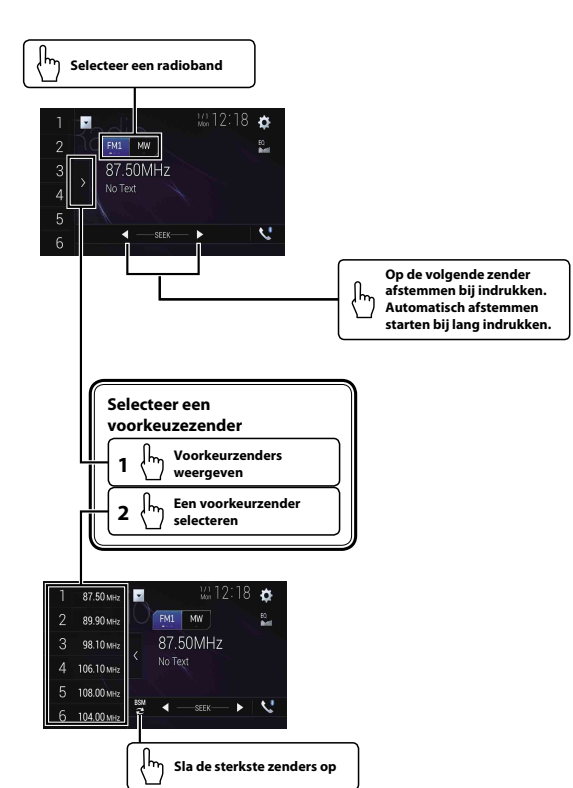
: Aanraken : Slepen



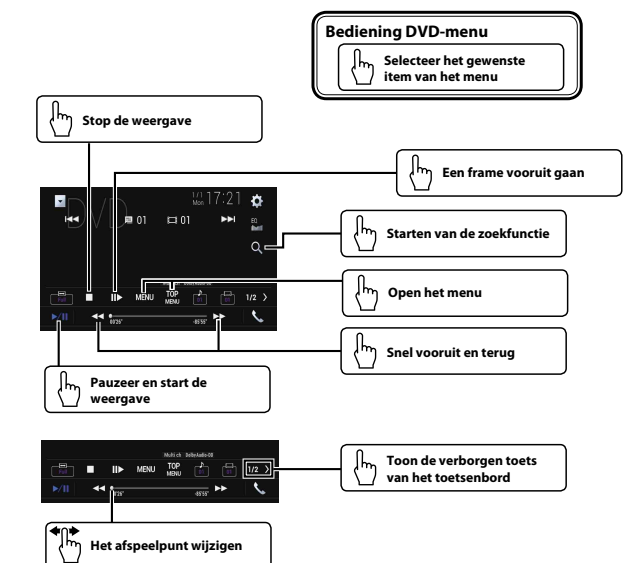
De klok instellen



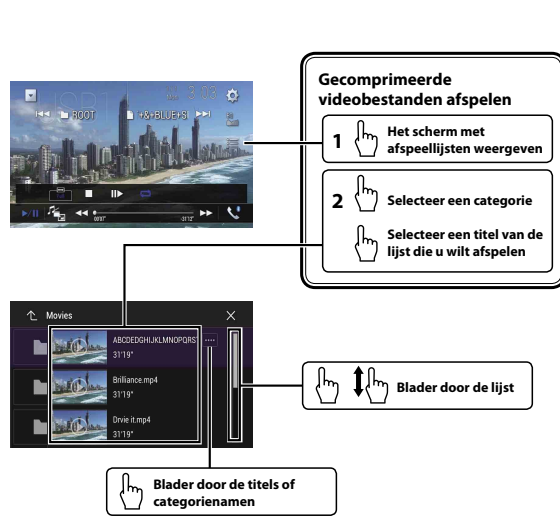
Bediening van de tuner (radio)



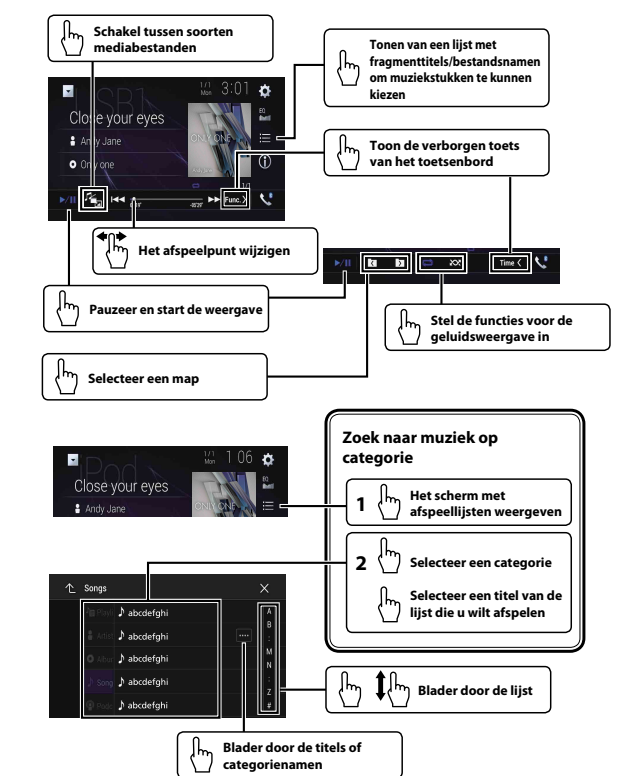
Bediening bewegende beelden



Bediening bewegende beelden



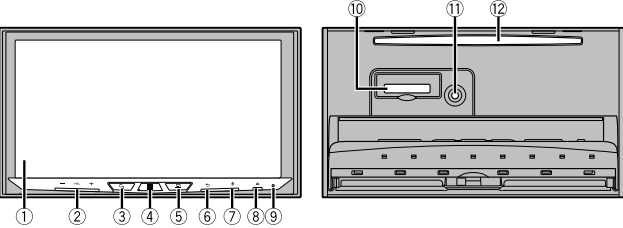
Bediening audiofuncties



Bediening Bluetooth telefoon



Wat is wat



- 1 LCD-scherm
- 2 VOL (+/-)-toets
- 3 -toets
Druk hierop om over te schakelen tussen het applicatiescherm en het AV-bedieningsscherm.
Houd ingedrukt om over te schakelen naar de camerawaergavemodus.
- 4 -toets
Druk hierop om het beginmenuscherm weer te geven.
Houd ingedrukt om het apparaat uit te schakelen.
- 5 -toets
Druk hierop om de menubalk weer te geven.
Houd ingedrukt om het geluid te dempen of weer te geven.
- 6 -toets
Druk hierop om het hoofdmenu weer te geven of om naar het vorige scherm terug te keren.
Houd ingedrukt om het display uit te schakelen.
- Wanneer het display is uitgeschakeld, tik u het scherm aan om terug te keren naar het originele scherm.
- 7 -toets
Druk hierop om de functie spraakherkenning te activeren met een aangesloten iPhone of smartphone.
- 8 -toets
- 9 RESET-toets
- 10 SD-kaartsleuf
- 11 Ingang voor Auto EQ-microfoon
- 12 Disc-laadsleuf

